

BIOME ACTIVITY

Objective

Students will identify what biomes animals live in.

Supplies

- a picture of the biomes (see next pages for a color page for sorting biomes, or create your own)
- a box of animal crackers for each student or group

Procedure

1. Give each student (group) a box of animal crackers and a biome picture page.
2. Have students sort the animals into the biomes where they belong.
3. Have the students discuss why the animals belong in the habitats they put them in (answers may differ depending on the animal cracker brand and on student interpretation: e.g., if you have a “bear” in your animal cracker box, students may determine that it is a polar bear and belongs in the Arctic Ocean habitat, or that it is a black bear and belongs in the grasslands biome).
4. Have students compare their results with another student or group. Discuss differences. Again, differences are acceptable as long as reasoning is sound.
5. Use reference materials to determine and support decisions.

Optional Activity: Graph the Data (use the one provided or make your own)

1. Count the number of animal cracker animals in each habitat.
2. Record on the graph.

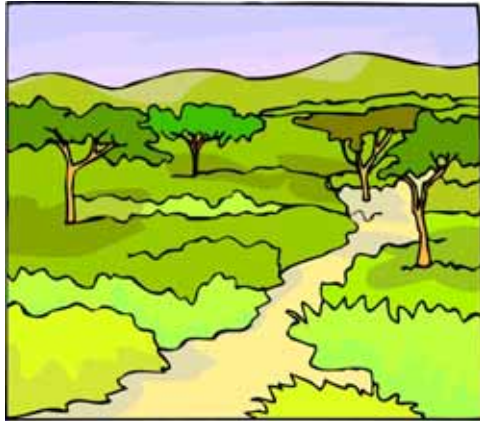
TUNDRA



DECIDUOUS FOREST



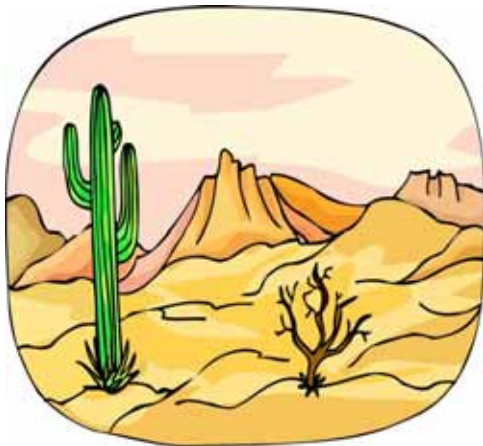
GRASSLAND



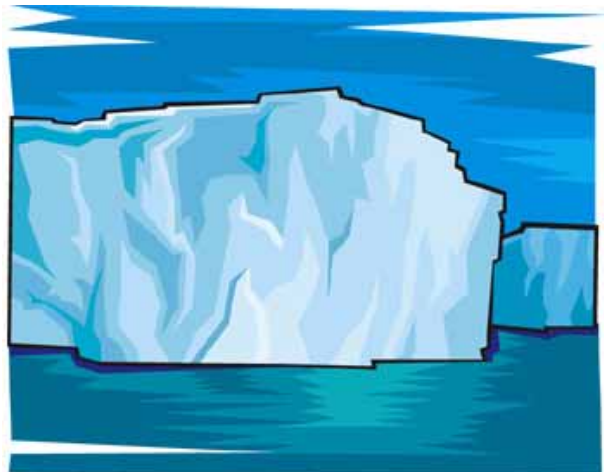
RAIN FOREST



DESERT



OCEAN



ANIMAL CRACKERS BY BIOME

tundra																	
forest																	
grassland																	
rain forest																	
desert																	
ocean																	

Number of Animals

Answers to ANIMAL CRACKER BIOMES

A typical animal cracker box contains the following animals, which may be placed in the suggested categories. Some animals may belong in more than one category:

bear	tundra
bison	grassland
camel	desert
cougar	deciduous forest
elephant	grassland
giraffe	grassland
gorilla	rain forest
hippo	grassland
hyena	desert
kangaroo	grassland
koala	deciduous forest
lion	grassland
monkey	rain forest
rhino	grassland
seal	ocean
bighorn sheep	desert
tiger	grassland
zebra	grassland