

"-" Boom Boom Pow

subtraction problem with double (2)

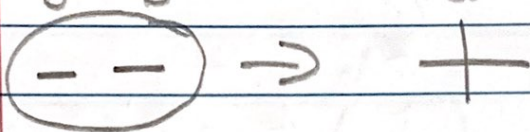
negatives in the middle -

two negatives side by side  $4 - (-6)$

B B

Pow!

double negative



$$4 - (-6) =$$

$$4 \cancel{-} 6$$

$$4 + 6 = 10$$

$$5 - -3 =$$

$$5 \cancel{-} 3 =$$

$$5 + 3 = 8$$

$$\underline{-6 + 3} \cancel{-} 2$$

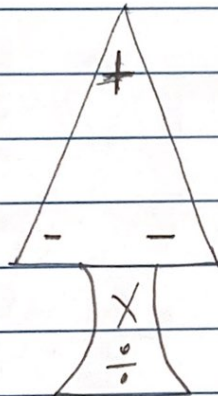
$$\underline{-3 + 2}$$

$$-1$$

# Multiplying Integers $\times$ and $\div$

Same signs = positive  $+$

different (not the same) = negative (not = neg)



$$+(+) = +$$

$$-(-) = +$$

$$+(-) = -$$

$$-2(-8) = +16$$

$$-24 \div 3 = -8 \quad \frac{-24}{3} \quad 3 \overline{)24}$$

$$12 \cdot -3 = -36$$

$$-4(-2) = +8$$