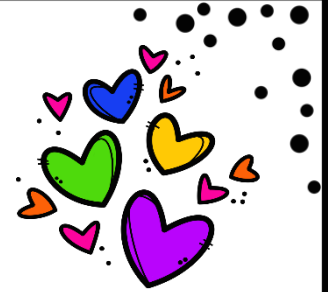


3<sup>rd</sup> Grade Peek of the Week  
Ms. Fife & Mrs. Lilley  
Week of September 20-24  
Sprinkle Kindness Like Confetti



Unit of Inquiry:

Who We Are

Central Idea:

Communities affect behavior

Lines of Inquiry:

Rights and Responsibilities

Roles within Communities

Behaviors and Traits

Learner Profile:

principled, risk-taker,

reflective

Related Concepts:

environmental, structure,

patterns

Reminders:

Sign-up for Fall  
Conferences if you have  
not already done so.

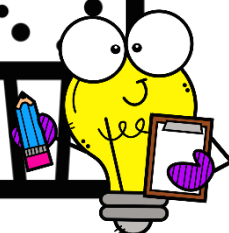
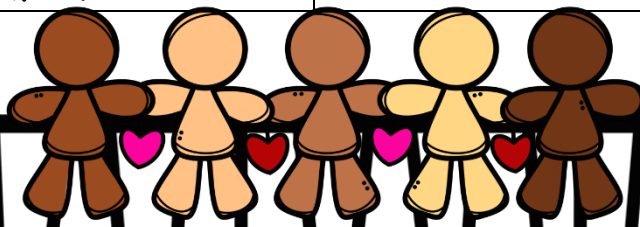
Student of the Week  
posters are due.

Don't forget to charge  
laptops and bring a charger  
to school.

Dates to Remember:

September 27:  
Picture Day

September 17-October 7:  
Big Kahuna Chocolate  
Fundraiser



## Shared Reading

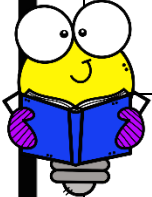
Context Clues  
Synonym/Antonyms  
Prefixes/Suffixes

## Language Arts

Common and Proper  
Nouns

## Read Aloud

Princess Hyacinth



## Math

Addition Word  
Problems and  
Subtraction  
Strategies

## Science

Parts and Functions  
of Plants

## Social Studies

Types and  
Characteristics of  
Communities

Specials 9:45-10:15 Lunch 11:45-12:15

### Fife Specials Rotation

Monday: Library  
Tuesday: PE  
Wednesday: Music  
Thursday: Spanish  
Friday: PE

Ms. Fife  
281-727-1700  
email:

[fifec@pearlandisd.org](mailto:fifec@pearlandisd.org)

website:

[Fife, Carmen / Teacher Home page \(pearlandisd.org\)](http://pearlandisd.org)

### Lilley Specials Rotation

Monday: Art  
Tuesday: PE  
Wednesday: Library  
Thursday: PE  
Friday: Music

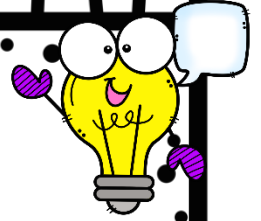
Mrs. Lilley  
281-727-1700  
email:

[lilleym@pearlandisd.org](mailto:lilleym@pearlandisd.org)

website:

[Lilley, Melody / Teacher Home page \(pearlandisd.org\)](http://pearlandisd.org)

# Vocabulary Words



1. **Unusual** – not common, remarkable
2. **Dreadful** – very bad; awful
3. **Impossible** – not able to make happen
4. **Firmly** – in a way that uses stress
5. **Bobbed** – to take a quick jerky movement up and down
6. **Notify** – to tell about, give notice of
7. **Rhinestone** – a fake gem that resembles and diamond
8. **Explain** – to give reason for
9. **Reel** – to catch or get back by winding in
10. **Hem** – the edge of a dress that has been folded back and sewn down.

# Spelling Words

1. explain
2. complain
3. playful
4. holiday
5. eight
6. sleigh
7. cupcake
8. place
9. baseball
10. they

