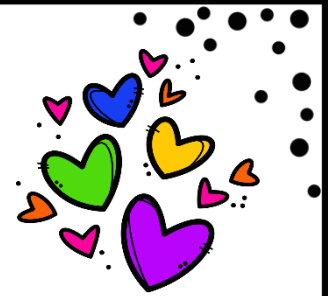




3rd Grade Peek of the Week
Ms. Fife & Mrs. Lilley
Week of Sept. 27- Oct. 1
Sprinkle Kindness Like Confetti



Unit of Inquiry:

Who We Are

Central Idea:

Communities affect behavior

Lines of Inquiry:

Rights and Responsibilities

Roles within Communities

Behaviors and Traits

Learner Profile:

principled, risk-taker,

reflective

Related Concepts:

environmental, structure,

patterns

Reminders:

Sign-up for Fall
Conferences if you have
not already done so.

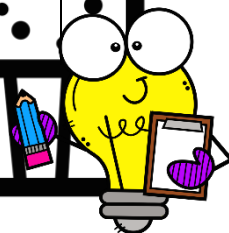
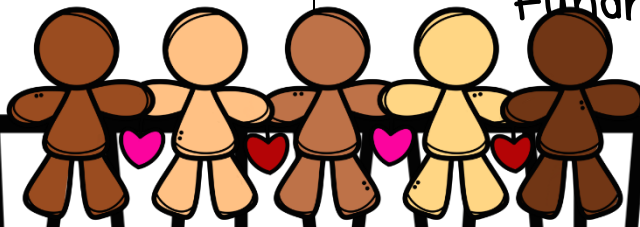
Don't forget to charge
laptops and bring a charger
to school.

Dates to Remember:

September 27:
Picture Day

Student Holiday:
October 11

September 17-October 7:
Big Kahuna Chocolate
Fundraiser





Shared Reading

Context Clues
Dictionary Use
Multiple Meaning
Words

Language Arts

Singular and Plural
Nouns

Read Aloud

Princess Hyacinth

Math

Addition and
Subtraction Word
Problems

Science

Parts and Functions
of a Seed

Social Studies

How Communities Have
Changed Over Time

Specials 9:45-10:15 Lunch 11:45-12:15

Fife Specials Rotation

Monday: Art
Tuesday: PE
Wednesday: Library
Thursday: PE
Friday: Music

Lilley Specials Rotation

Monday: Spanish
Tuesday: PE
Wednesday: Art
Thursday: PE
Friday: Library

Ms. Fife
281-727-1700
email:

fifec@pearlandisd.org

website:

[Fife, Carmen / Teacher Home page \(pearlandisd.org\)](http://Fife, Carmen / Teacher Home page (pearlandisd.org))

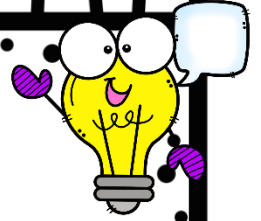
Mrs. Lilley
281-727-1700
email:

lilleym@pearlandisd.org

website:

[Lilley, Melody / Teacher Home page \(pearlandisd.org\)](http://Lilley, Melody / Teacher Home page (pearlandisd.org))

Vocabulary Words



1. **Unusual** – not common, remarkable
2. **Dreadful** – very bad; awful
3. **Impossible** – not able to make happen
4. **Firmly** – in a way that uses stress
5. **Bobbed** – to take a quick jerky movement up and down
6. **Notify** – to tell about, give notice of
7. **Rhinestone** – a fake gem that resembles and diamond
8. **Explain** – to give reason for
9. **Reel** – to catch or get back by winding in
10. **Hem** – the edge of a dress that has been folded back and sewn down.

Spelling Words

1. breeze
2. succeed
3. appeal
4. reading
5. copy
6. nobody
7. money
8. donkey
9. niece
10. cookie

