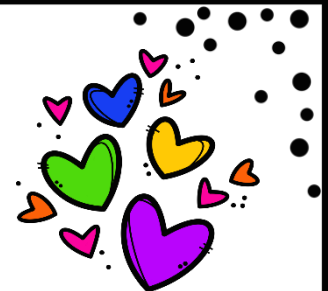




3rd Grade Peek of the Week
Ms. Fife & Mrs. Lilley
Week of Oct. 11-15
Sprinkle Kindness Like Confetti



Unit of Inquiry:

Where We Are in Place and Time

Central Idea:

Progress impacts discovery

Lines of Inquiry:

- Interdependence in communities
- Relationships within environments
- Human influences on communities and environments

Learner Profile:

Inquirers, Communicators,

Balanced

Related Concepts:

Discovery, Conflict
Communication

Reminders:

Turn in fundraiser money if needed.

Please only send water for the classroom. Juice and soda will not be allowed.

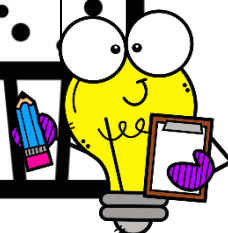
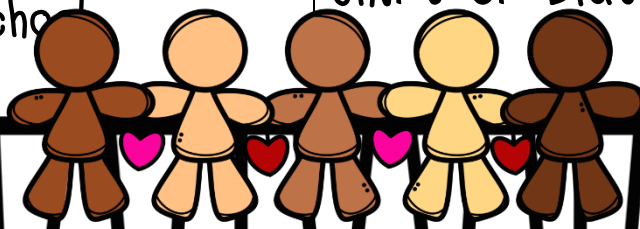
Don't forget to charge laptops and bring a charger to school.

Dates to Remember:

Oct. 11 – Student Holiday

Oct. 13 – Chick fil a Spirit Night

Oct. 15 – Spirit Rally, wear a Massey Ranch shirt or blue or green





Shared Reading

Fiction
-Plot
- Influence of
Setting

Language Arts

Possessive
Pronouns

Read Aloud

Picnic at Mudsock
Meadow

Math

Rounding Numbers
using a number line.
Solving estimation
word problems.

Science

Ecosystems and living
and non-living things.

Social Studies

Christopher Columbus
Day

Specials 9:45-10:15 Lunch 11:45-12:15

Fife Specials Rotation

Monday: NO SCHOOL

Tuesday: PE

Wednesday: Music

Thursday: Spanish

Friday: PE

Lilley Specials Rotation

Monday: NO SCHOOL

Tuesday: PE

Wednesday: Library

Thursday: PE

Friday: Music

Ms. Fife

281-727-1700

email:

fifec@pearlandisd.org

website:

[Fife, Carmen / Teacher Home page \(pearlandisd.org\)](http://pearlandisd.org)

Mrs. Lilley

281-727-1700

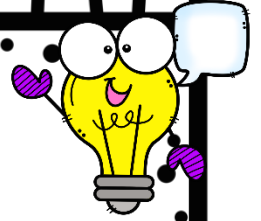
email:

lilleym@pearlandisd.org

website:

[Lilley, Melody / Teacher Home page \(pearlandisd.org\)](http://pearlandisd.org)

Vocabulary Words



1. **Mortified** – extremely embarrassed
2. **legend** – a story that has been handed down from an earlier time
3. **reveal** – to make known, tell
4. **convincing** – causing someone to believe that something is true or real
5. **preparations** – the act or process of making or getting ready for something
6. **mischievous** – tending to behave in an annoying or mildly harmful way
7. **eerie** – mysterious and frightening; weird
8. **bleak** – bare, cold, or not protected from weather
9. **glowering** – to have an angry look on one's face; scowl
10. **authority** – the power to give orders

Spelling Words

1. grouchy
2. scour
3. cloudy
4. sound
5. pounded
6. shower
7. flower
8. crowded
9. growling
10. powerful

