



3rd Grade Peek of the Week
Ms. Fife & Mrs. Lilley
Week of Nov.1-5
Sprinkle Kindness Like Confetti



Unit of Inquiry:

Where We Are in Place and Time

Central Idea:

Progress impacts discovery

Lines of Inquiry:

- Interdependence in communities
- Relationships within environments
- Human influences on communities and environments

Learner Profile:

Inquirers, Communicators,

Balanced

Related Concepts:

Discovery, Conflict
Communication

Reminders:

Please submit Veteran's Day photos if you would like to honor someone. An information sheet went home.

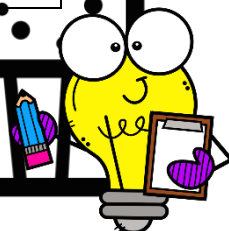
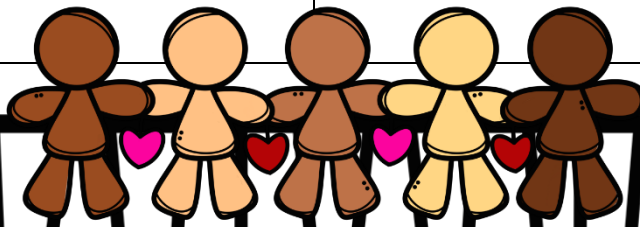
Birthday treats need to be store bought and individual.

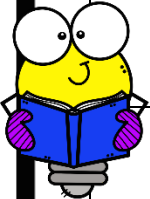
Don't forget to charge laptops and bring a charger to school.

Dates to Remember:

November 11: Veteran's Day

Thanksgiving Holidays:
November 22-26





Shared Reading

Summary in Fiction texts

Language Arts

Subject/Verb Agreement

Read Aloud

How Many Days to America?

Math

Solve 2x1 digit multiplication by using area model and partial product.

Science

Ecosystems: How changes affect an ecosystem.

Social Studies

Founding Fathers

Specials 9:45-10:15 Lunch 11:45-12:15

Fife Specials Rotation

Monday: PE
Tuesday: Music
Wednesday: Spanish
Thursday: PE
Friday: Art

Ms. Fife

281-727-1700

email:

fifec@pearlandisd.org

website:

[Fife, Carmen / Teacher Home page \(pearlandisd.org\)](http://pearlandisd.org)

Lilley Specials Rotation

Monday: PE
Tuesday: Library
Wednesday: PE
Thursday: Music
Friday: Spanish

Mrs. Lilley

281-727-1700

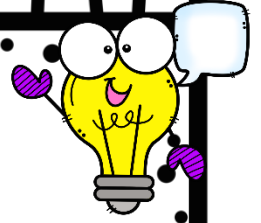
email:

lilleym@pearlandisd.org

website:

[Lilley, Melody / Teacher Home page \(pearlandisd.org\)](http://pearlandisd.org)

Vocabulary Words



1. **Restless** – not able to relax
2. **Quay** – a landing place for loading and unloading boats
3. **Anxious** – worried or nervous
4. **Huddled** – gathered together
5. **Garnets**– a dark red stone that is used in jewelry
6. **Village** – a small town
7. **Shy** – feeling nervous and uncomfortable
8. **Bow** – the front part of a boat
9. **Scrambled** – to move or act quickly
10. **Clasped** – to hold strongly

Spelling Words

1. artist
2. carton
3. cherish
4. never
5. dirty
6. admire
7. turnip
8. disturb
9. corner
10. error

